

Interface Manager instalation manual

Requirements:

.NET4.8

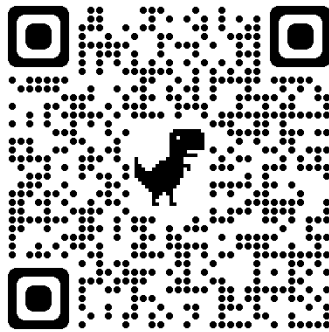
Static IP address for the PC, where is running InterfaceManager app

Static IP address for encoder, payment terminal etc...

Verify with supplier the port of the device (identity reader, encoder, payment terminal or token reader)

QR code links to the installation video

The video tutorial shows the installation of the IdentityReader module, but it can also be used to install other modules.



Unpacking InterfaceManager

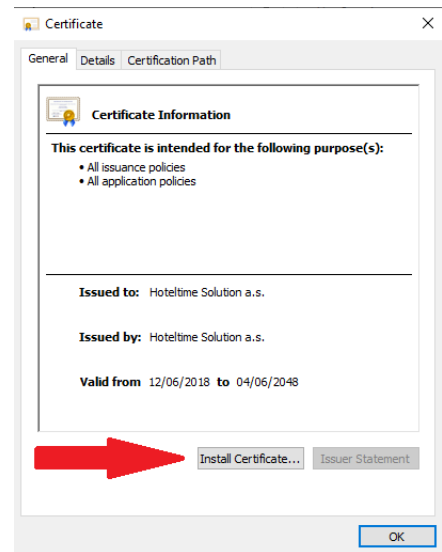
- Create a folder, where the InterfaceManager will be located and Unzip InterfaceManager file there. We recommend unzip the file to "C:\hoteltimesolutions*\".
- Add the InterfaceManager.exe at startup. Press Windows Button + R and type: "shell:startup" and add the shortcut there.

*This depends on the name of the module you are installing. For example: IdentityReader, Sonet, GPE, Salto, Onity, etc.

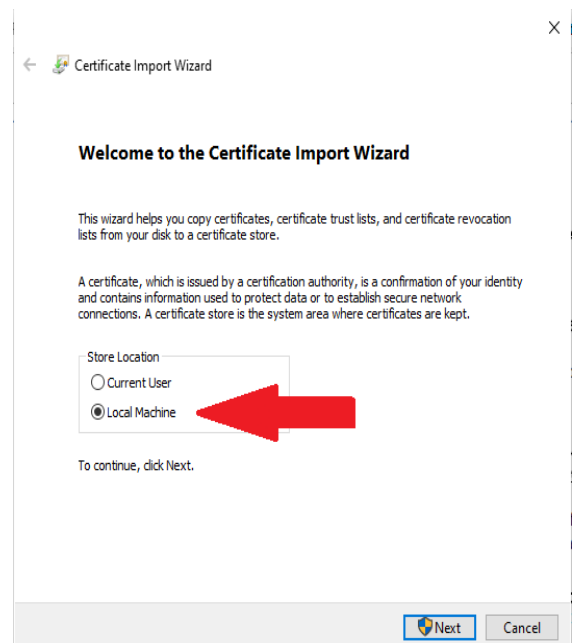
Installation of certificates

- If you decide to use your own certificate, let our support know the name of DNS record, which you used.
- Certificates are stored in the **“cert”** folder. If you want to use your own certificate, verify its validity and if the system accept it. We will perform the installation according to the following steps:

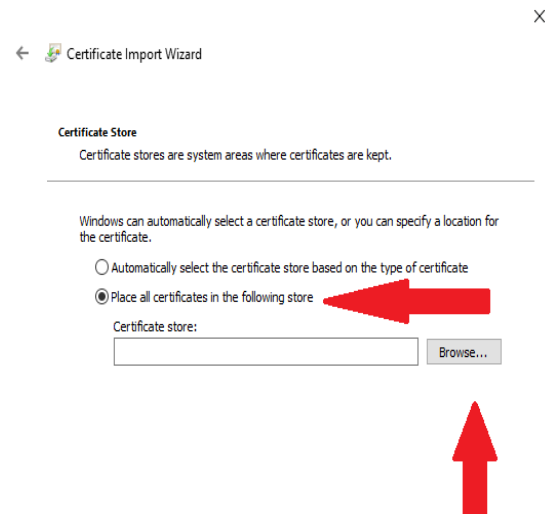
- 1) Double click the certificate to begin the installation. Start with **“hoteltime_rootCA”**.



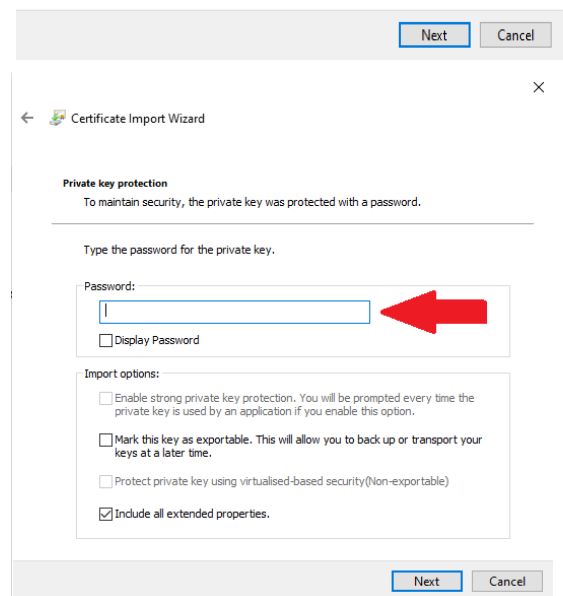
- 2) Select where the certificates will be installed. For InterfaceManager we recommend to install certificates into local machine.



- 3) Select where the certificates will be stored. Store certificates into **“Trusted Root Certification Authorities”**. Continue the same way with the second certificate



- 4) Continue the same way with the second certificate, but you will be asked for password. Password is **“hoteltime”**.



Local DNS settings

- Open the "hosts" file, which is located in the "C:\windows\system32\drivers\etc" directory. Open the file, for example, in the Notepad while running it as administrator. In the file we add the IP address of the server or computer where the application is located and running and set the name according to the DNS name. If you are using Hotelttime certificates, use DNS names according the name of certificate you can find in "cert" folder and edit it like in the example below.

Example:

```
127.0.0.1    locksystem.hotelttime.local
127.0.0.1    identityreader.hotelttime.local
127.0.0.1    terminal.hotelttime.local
127.0.0.1    tokenreader.hotelttime.local
```

Run InterfaceManager

- You can run InterfaceManager 2 ways:
 1. Run app like administrator. Right-click on the app go to "compatibility" and select "Run as administrator" in Settings section
 2. Using SSL binding.

More computers, one reader, encoder, terminal or tokenreader

- If you want to use more computers with one reader, encoder, payment terminal or tokenreader, configure interfaceManager app on one computer which will be working as "server" and setup it by the manual. For other computers, you only need to install certificates and add IP address of the PC, where is running InterfaceManager app to the hosts and again add DNS names like in the "server" PC.
- If you are using more computers, make sure, that in InterfaceManager config is HTTPHost address 0.0.0.0, for locksystems in InterfaceManager.exe.conf in httpendpoint. The reason is to make InterfaceManager accepts request from more computers.

Technical support

Along with this manual you have a FAQ document that describes most of the possible problems when installing IFC and how to solve them. Again, the IdentityReader module is used as a model example, but the solution can be applied to other modules as well.

If you do not know the advice, please contact us at the e-mail address support@hoteltime.com or call our technical line at +420 228 882 269. Please prepare a list of actions you have already performed so that our technicians can correctly identify the problem arose.